

Client: NOVERA COMPOUNDS LLC
 procurement@noveracompounds

 Sample received: **04/13/26**
 Analysis conducted: **04/24/26**

Compound:	Tesamorelin/Ipamorelin	CAS:	218949-48-5
Batch/Lot #:	2X12A013026	Formula:	C221H366N72O67S
Appearance:	White lyophilized powder	Mol Wt:	5136 g/mol

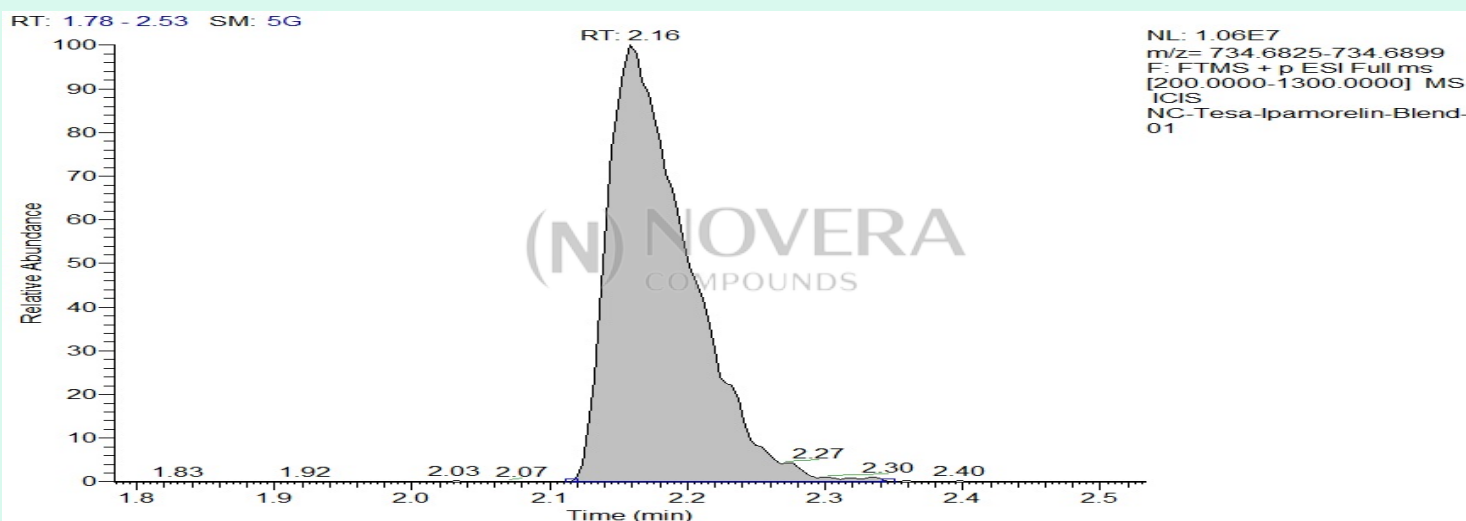
Method: Qualitative and Quantitative chemical analysis by Ultra High Performance Liquid Chromatography with Mass Spectrometry

Pubchem CID: 16137828

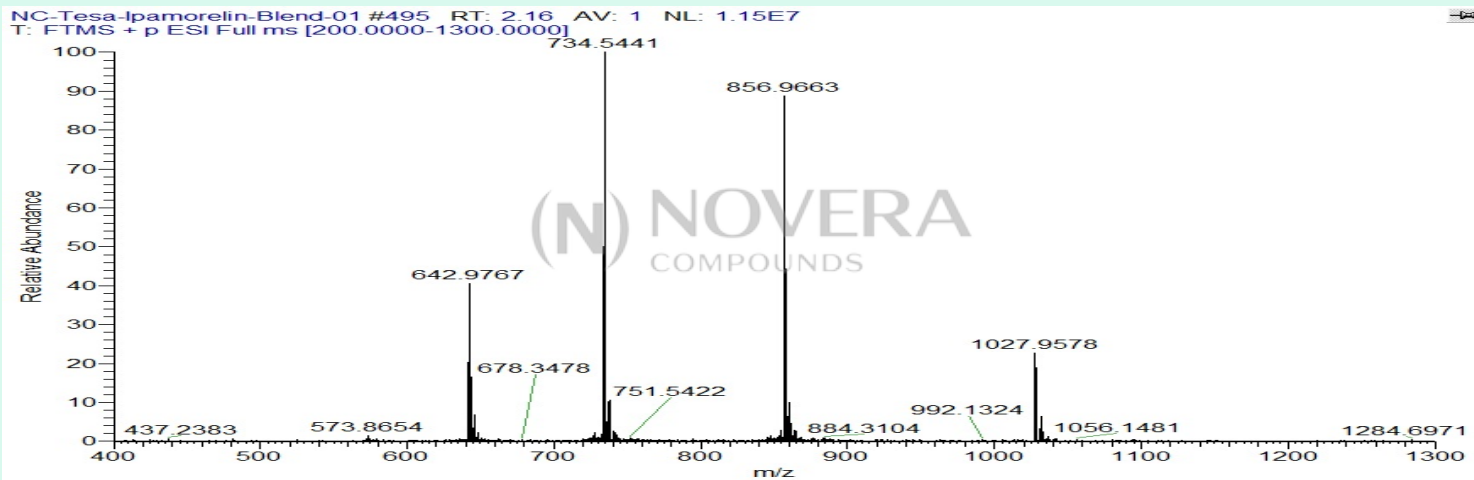
Tesamorelin | C221H366N72O67S | CID 16137828

	Specification	Result	
Identity Test:	Tesamorelin	Tesamorelin	Conforms
Quantity:	10 mg	11.9 mg	Over-Conforming
Purity:	>99%	99.57%	Conforms

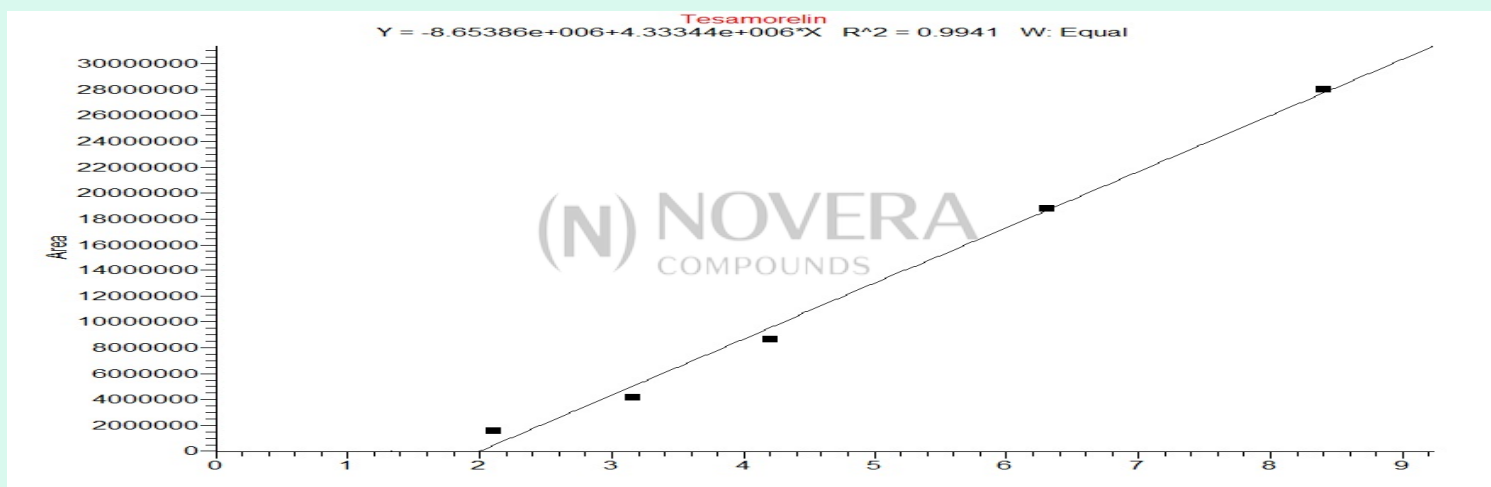
LC-MS Chromatogram and Retention Time Analysis



Full Scan Mass Spectrometry Analysis



Calibration Curve



Analysis Performed by

Dr. Victor Ugur
Analytical Chemist
contact@bioregen.com

COA #12928
Security Key **NOVCOMP01**
bioregen.com/verify



Victor Ugur

Client: NOVERA COMPOUNDS LLC
 procurement@noveracompounds

 Sample received: **04/13/26**
 Analysis conducted: **04/24/26**

Compound:	Tesamorelin/Ipamorelin	CAS:	170851-70-4
Batch/Lot #:	2X12A013026	Formula:	C38H49N9O5
Appearance:	White lyophilized powder	Mol Wt:	711.9 g/mol

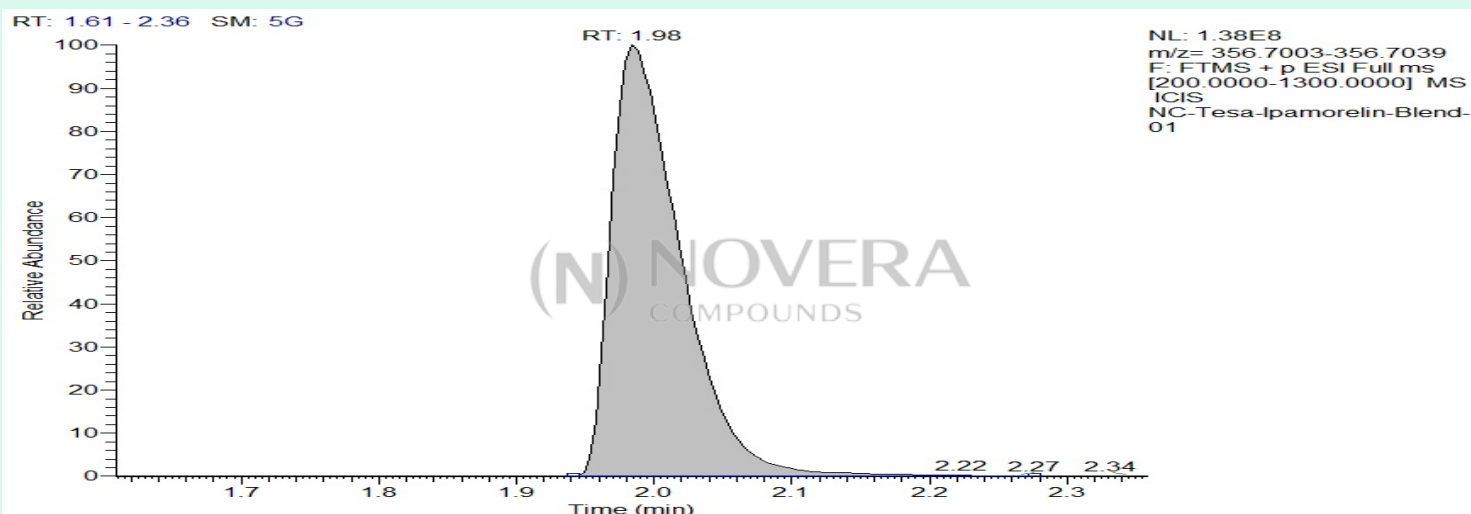
Method: Qualitative and Quantitative chemical analysis by Ultra High Performance Liquid Chromatography with Mass Spectrometry

Pubchem CID: 9831659

[Ipamorelin | C38H49N9O5 | CID 9831659](#)

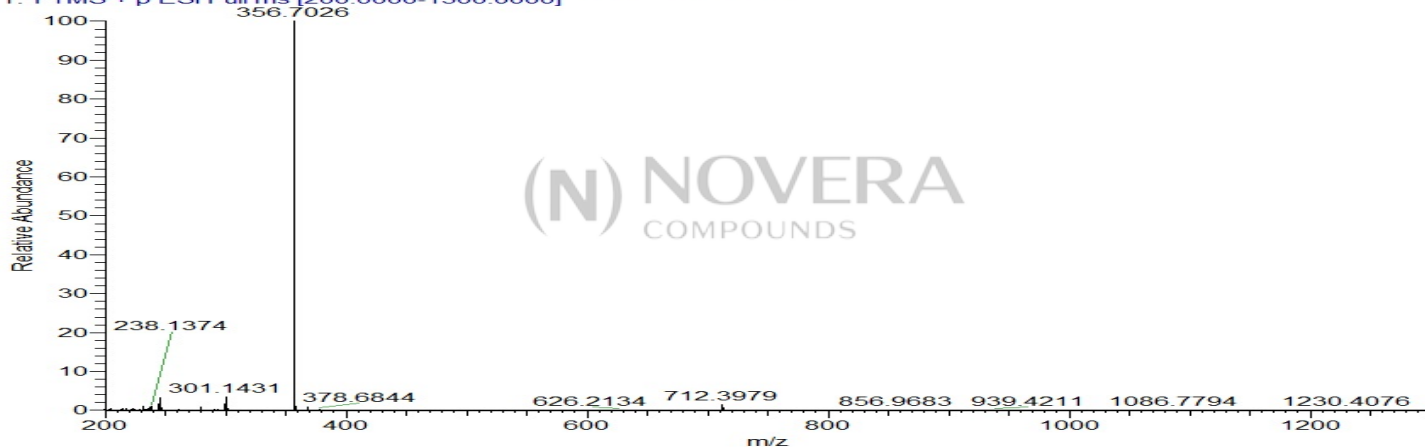
	Specification	Result	
Identity Test:	Ipamorelin	Ipamorelin	Conforms
Quantity:	2 mg	2.15 mg	Conforms
Purity:	>99%	99.42%	Conforms

LC-MS Chromatogram: Retention Time and Peak Analysis

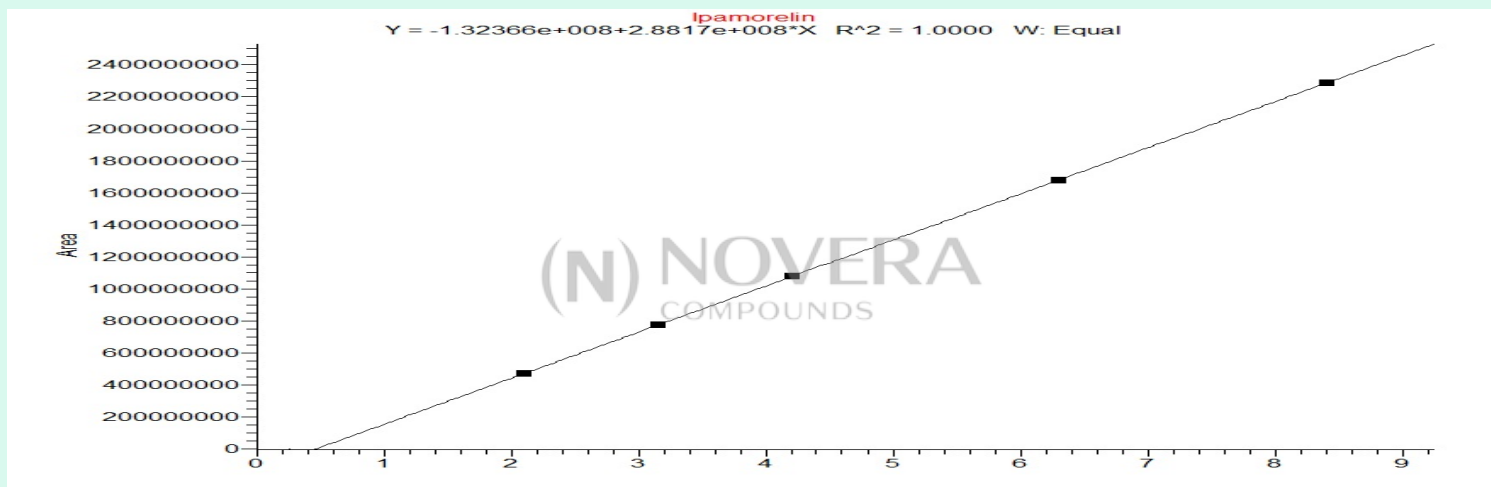


Full Scan Mass Spectrometry Analysis

NC-Tesa-Ipamorelin-Blend-01 #455 RT: 1.98 AV: 1 NL: 1.34E8
T: FTMS + p ESI Full ms [200.0000-1300.0000]



Calibration Curve



Analysis Performed by

Dr. Victor Ugur
Analytical Chemist
contact@bioregen.com

COA #12928
Security Key **NOVCOMP01**
bioregen.com/verify



Victor Ugur