

**Client: NOVERA COMPOUNDS LLC**  
 procurement@noveracompounds

 Sample received: **04/14/26**  
 Analysis conducted: **04/22/26**

Compound:	Epithalon (Epitalon)	CAS:	307297-39-8
Batch/Lot #:	EPI50A111425	Formula:	C14H22N4O9
Appearance:	White lyophilized powder	Mol Wt:	390.349 g/mol

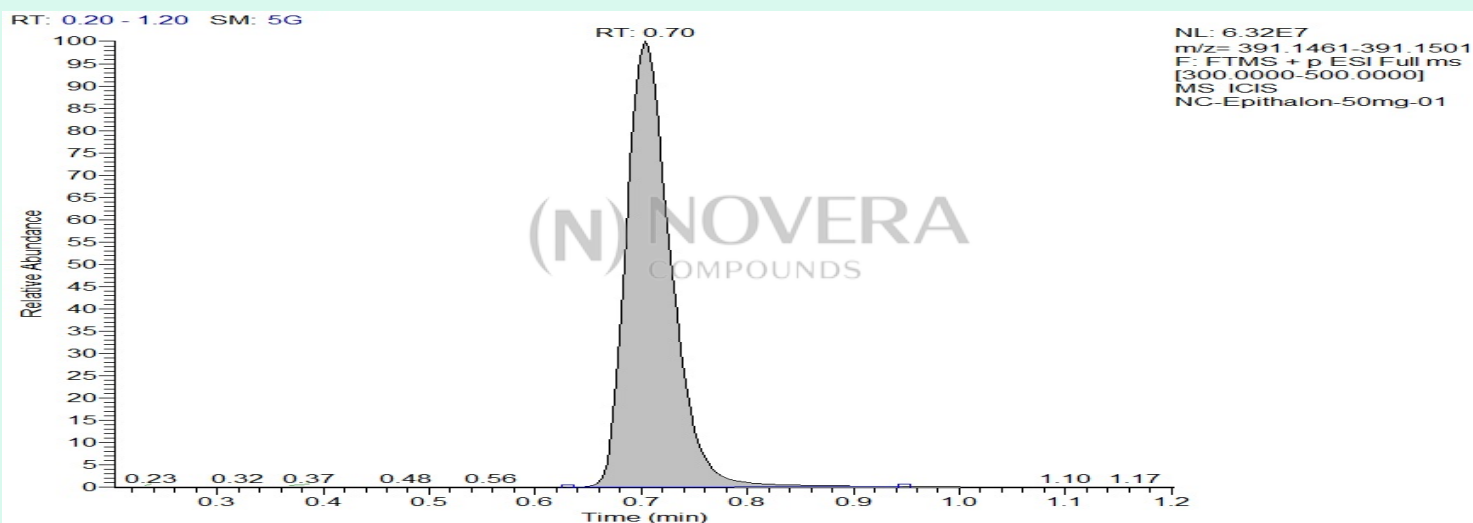
**Method:** Qualitative and Quantitative chemical analysis by Ultra High Performance Liquid Chromatography with Mass Spectrometry

**Pubchem CID:** 219042

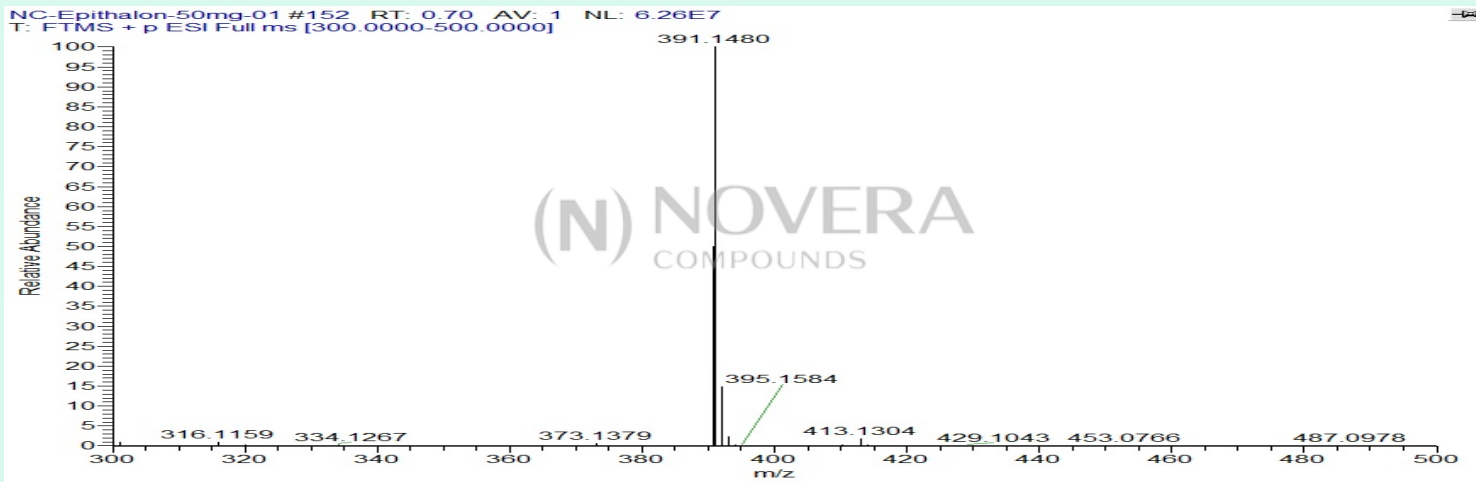
[Epithalon |C14H22N4O9 |219042](#)

	Specification	Result	
Identity Test:	Epithalon	<b>Epithalon</b>	<b>Conforms</b>
Quantity:	50 mg	49.59 mg	<b>Conforms</b>
Purity:	>99%	<b>99.69%</b>	<b>Conforms</b>

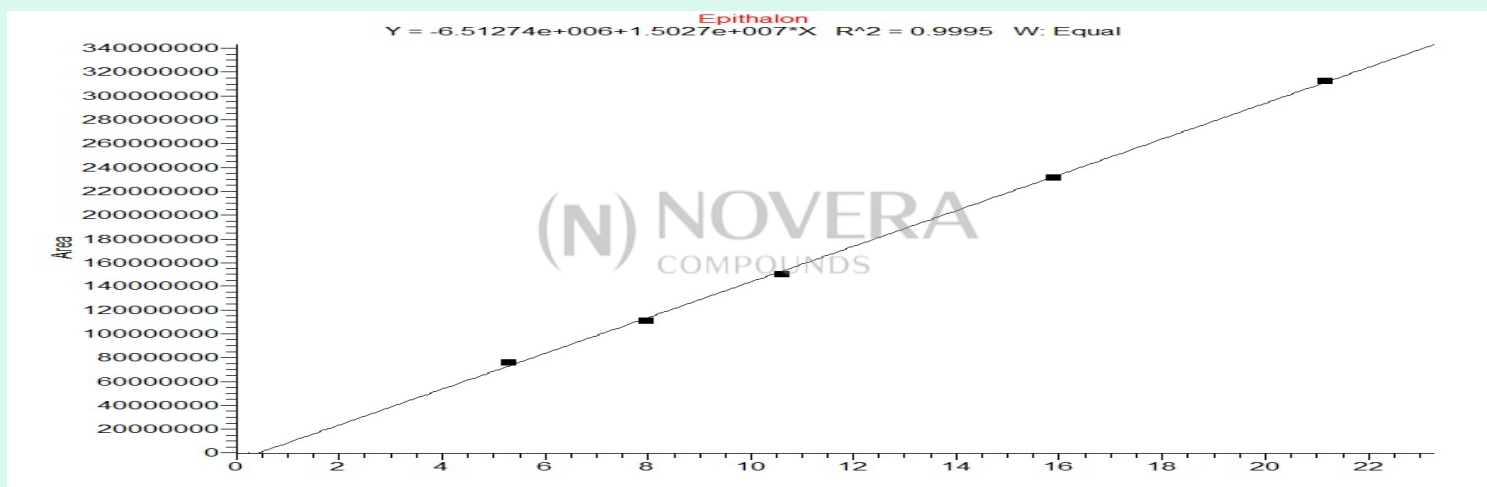
### LC-MS Chromatogram and Retention Time Analysis



# Full Scan Mass Spectrometry Analysis



## Calibration Curve



### Analysis Performed by

Dr. Victor Ugur  
Analytical Chemist  
contact@bioregen.com

COA #12881  
Security Key **NOVCOMP01**  
bioregen.com/verify



*Victor Ugur*