

**Client: NOVERA COMPOUNDS LLC**  
 procurement@noveracompounds

 Sample received: **03/28/26**  
 Analysis conducted: **03/28/26**

Compound:	PT-141	CAS:	189691-06-3
Batch/Lot #:	395407	Formula:	C50H68N14O10
Appearance:	White lyophilized powder	Mol Wt:	1025.182 g/mol

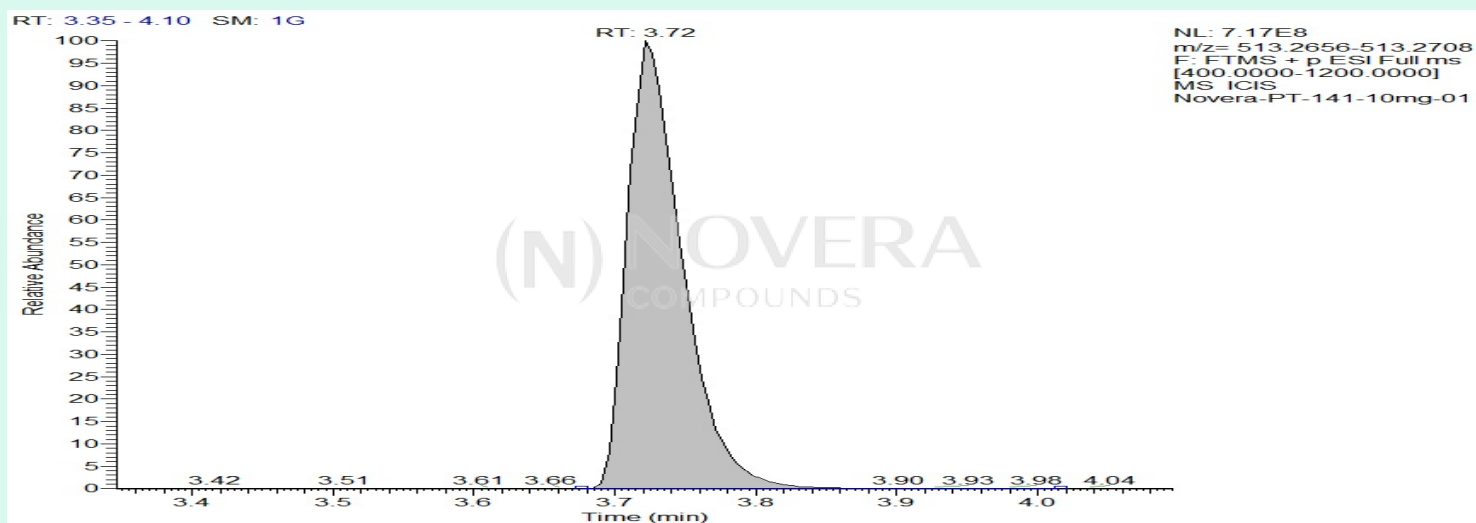
**Method:** Qualitative and Quantitative chemical analysis by Ultra High Performance Liquid Chromatography with Mass Spectrometry

**Pubchem CID:** 9941379

PT-141 | C50H68N14O10 | CID 9941379

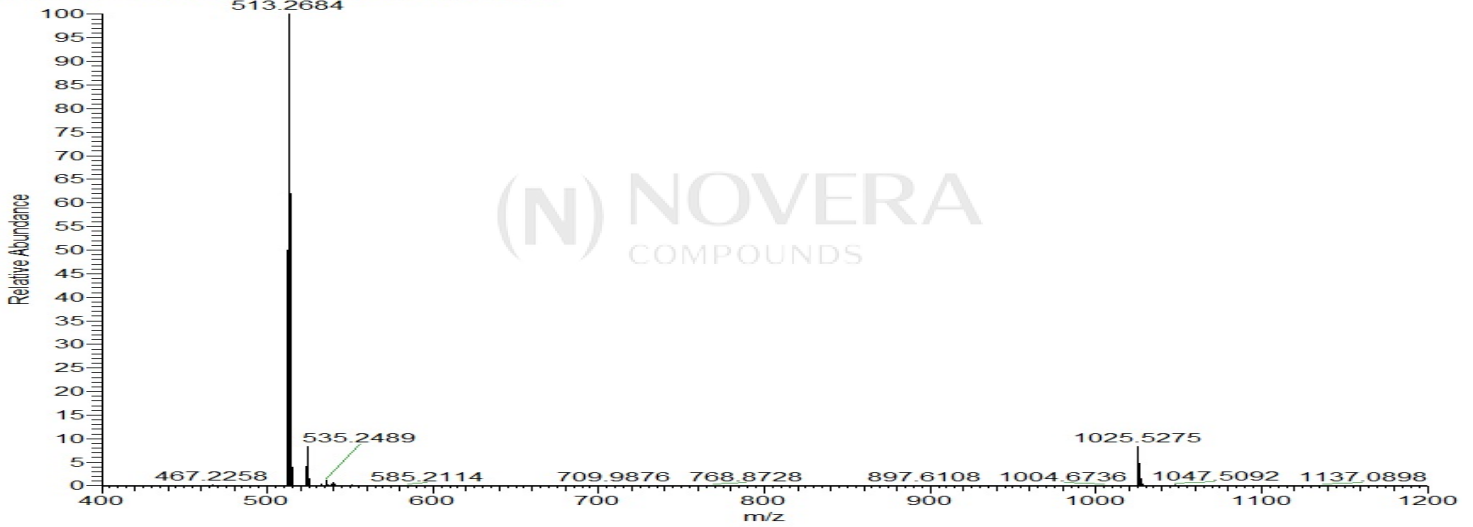
	Specification	Result	
Identity Test:	PT-141	<b>PT-141</b>	<b>Conforms</b>
Quantity:	10 mg	12.07 mg	<b>Over-Conforming</b>
Purity:	>99%	<b>99.51%</b>	<b>Conforms</b>

### LC-MS Chromatogram: Retention Time and Peak Analysis

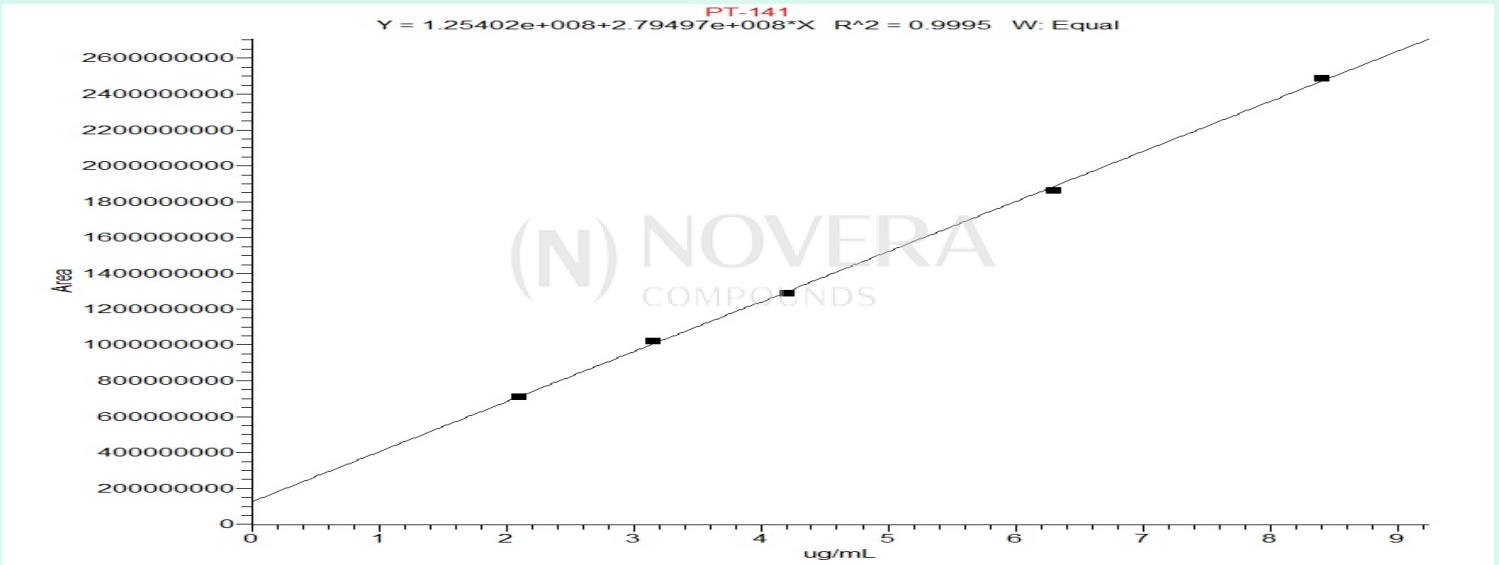


# Full Scan Mass Spectrometry Analysis

Novera-PT-141-10mg-01 #450 RT: 3.72 AV: 1 NL: 6.83E8  
T: FTMS + p ESI Full ms [400.0000-1200.0000]



## Calibration Curve



**Analysis Performed by**  
Dr. Victor Ugur  
Analytical Chemist  
contact@bioregen.com

COA #12629  
Security Key **NOVCOMP01**  
bioregen.com/verify



*Victor Ugur*