

Client: NOVERA COMPOUNDS LLC
 procurement@noveracompounds

 Sample received: **03/24/26**
 Analysis conducted: **03/25/26**

Compound:	Retatrutide	CAS:	2381089-83-2
Batch/Lot #:	395388	Formula:	C221H342N46O68
Appearance:	White lyophilized powder	Mol Wt:	4845.444 g/mol

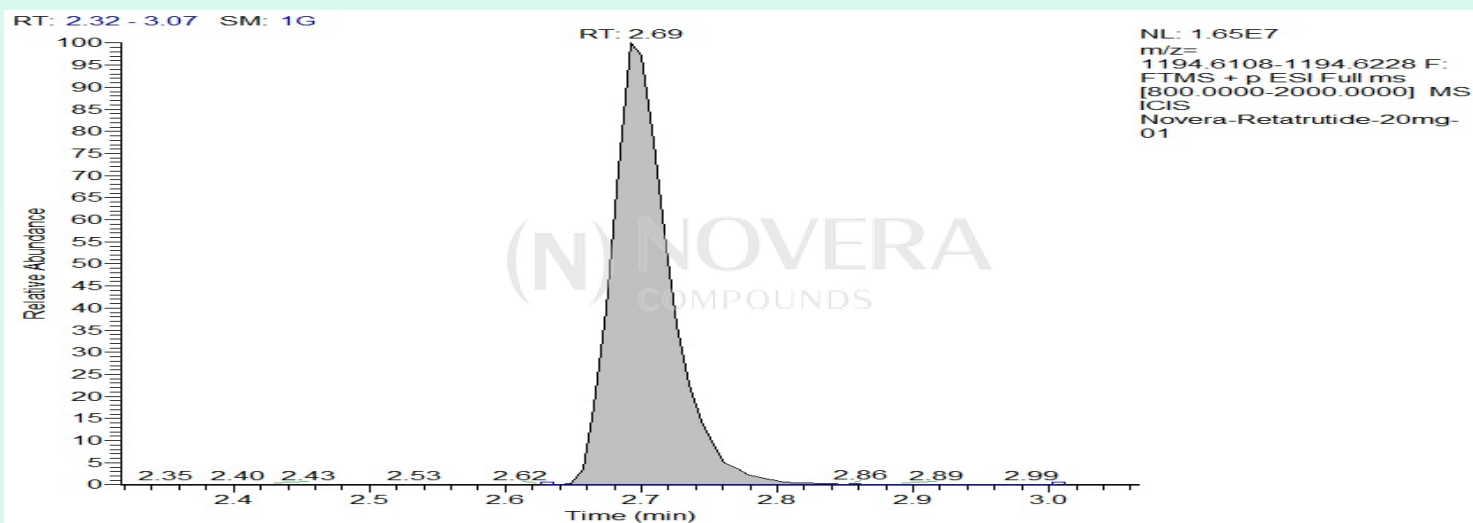
Method: Qualitative and Quantitative chemical analysis by Ultra High Performance Liquid Chromatography with Mass Spectrometry

Pubchem CID: 171390338

Retatrutide | C221H342N46O68 | Pubchem CID 171390338

	Specification	Result	
Identity Test:	Retatrutide	Retatrutide	Conforms
Quantity:	20 mg	19.3 mg	Conforms
Purity:	>99%	99.54%	Conforms

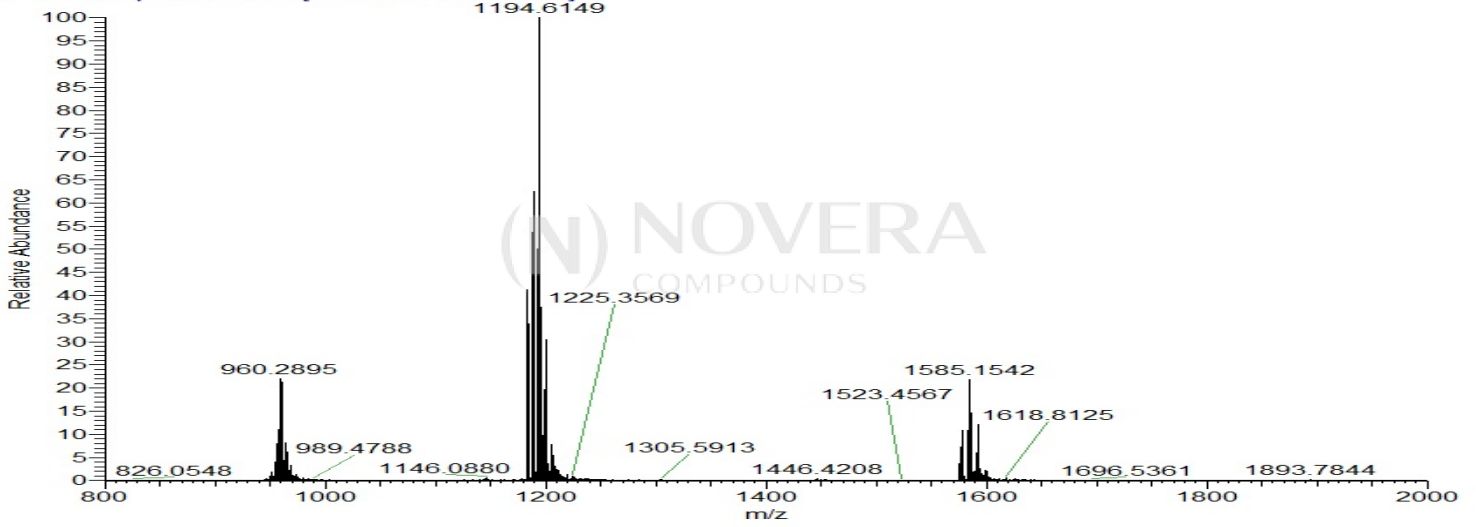
LC-MS Chromatogram: Retention Time and Peak Analysis



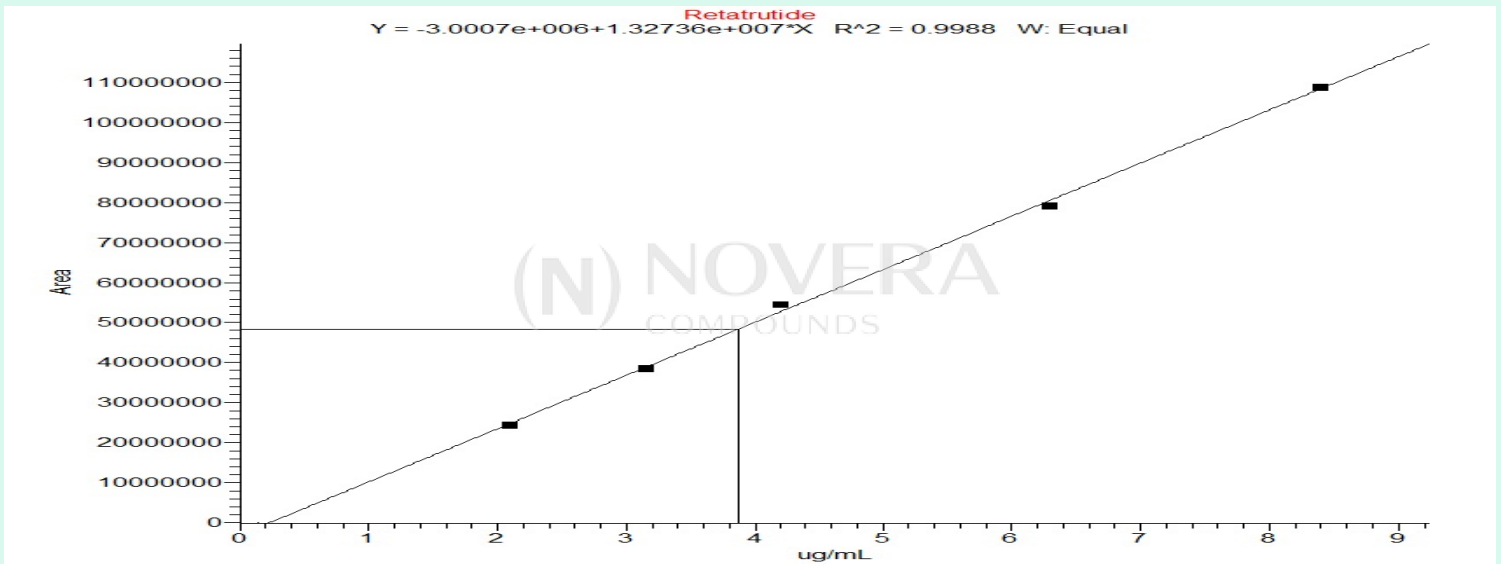
Full Scan Mass Spectrometry Analysis

Novera-Retatrutide-20mg-01 #309 RT: 2.69 AV: 1 NL: 1.55E7

T: FTMS + p ESI Full ms [800.0000-2000.0000]



Calibration Curve



Analysis Performed by

Dr. Roberto Marin
Analytical Chemist
contact@bioregen.com

COA #12586
Security Key **NOVCOMP01**
bioregen.com/verify

Roberto Marin

