

**Client: NOVERA COMPOUNDS LLC**  
 procurement@noveracompounds

 Sample received: **03/13/26**  
 Analysis conducted: **03/20/26**

Compound:	Retatrutide	CAS:	2381089-83-2
Batch/Lot #:	395437	Formula:	C221H342N46O68
Appearance:	White lyophilized powder	Mol Wt:	4845.444 g/mol

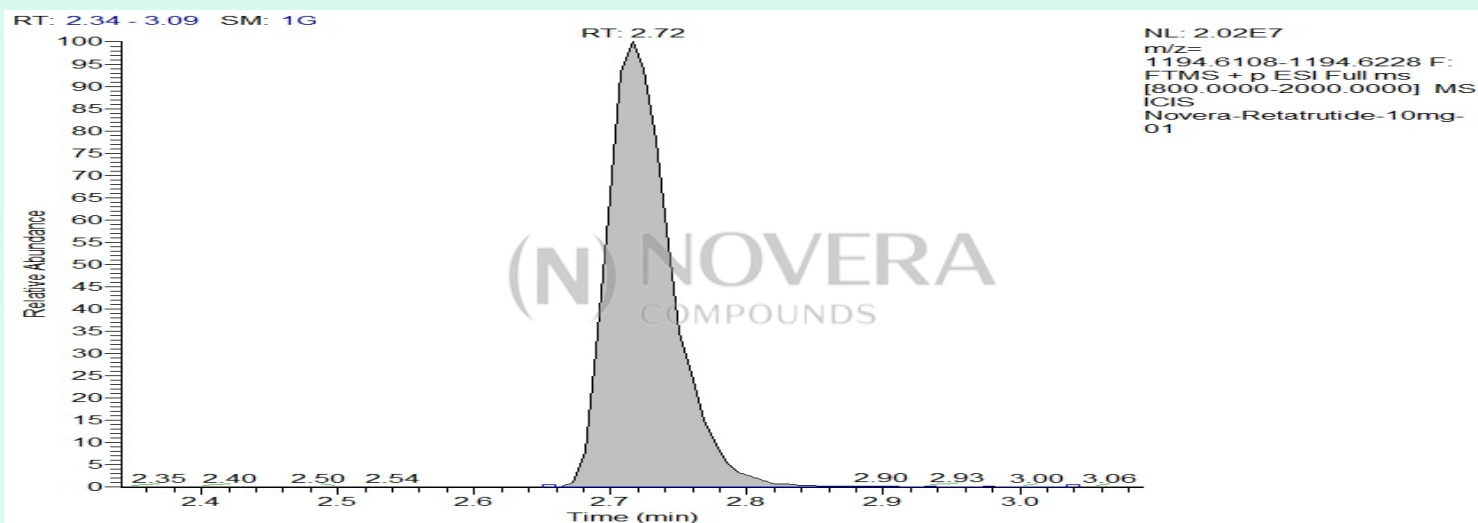
**Method:** Qualitative and Quantitative chemical analysis by Ultra High Performance Liquid Chromatography with Mass Spectrometry

**Pubchem CID:** 171390338

Retatrutide | C221H342N46O68 | Pubchem CID 171390338

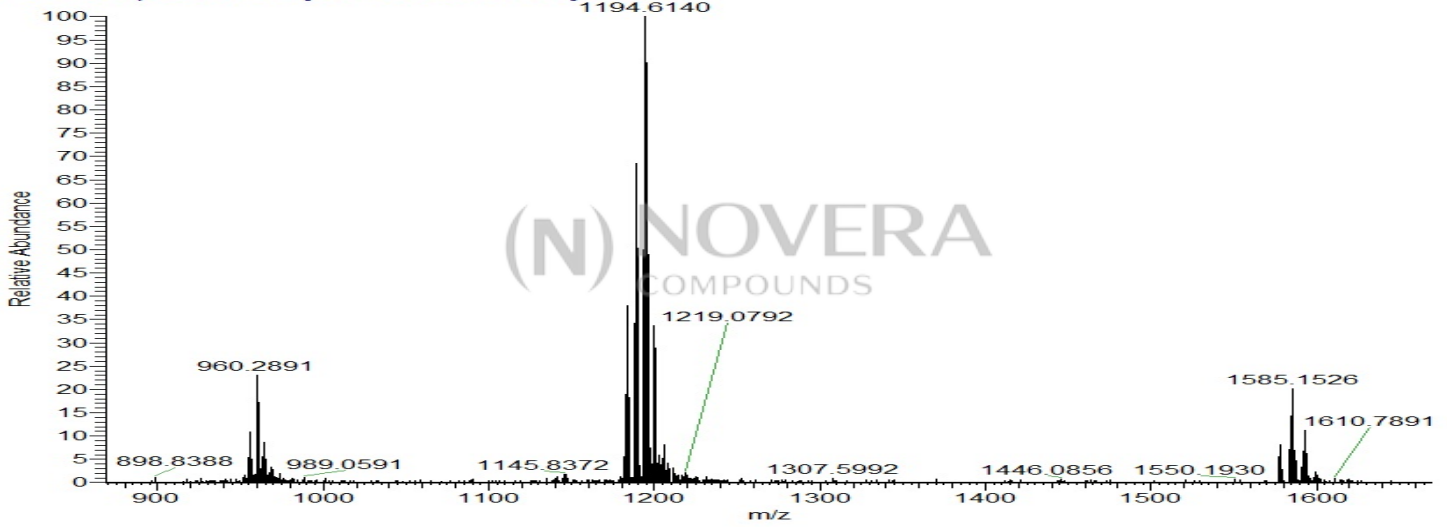
	Specification	Result	
Identity Test:	Retatrutide	<b>Retatrutide</b>	<b>Conforms</b>
Quantity:	10 mg	10.4 mg	<b>Conforms</b>
Purity:	>99%	<b>99.63%</b>	<b>Conforms</b>

### LC-MS Chromatogram: Retention Time and Peak Analysis

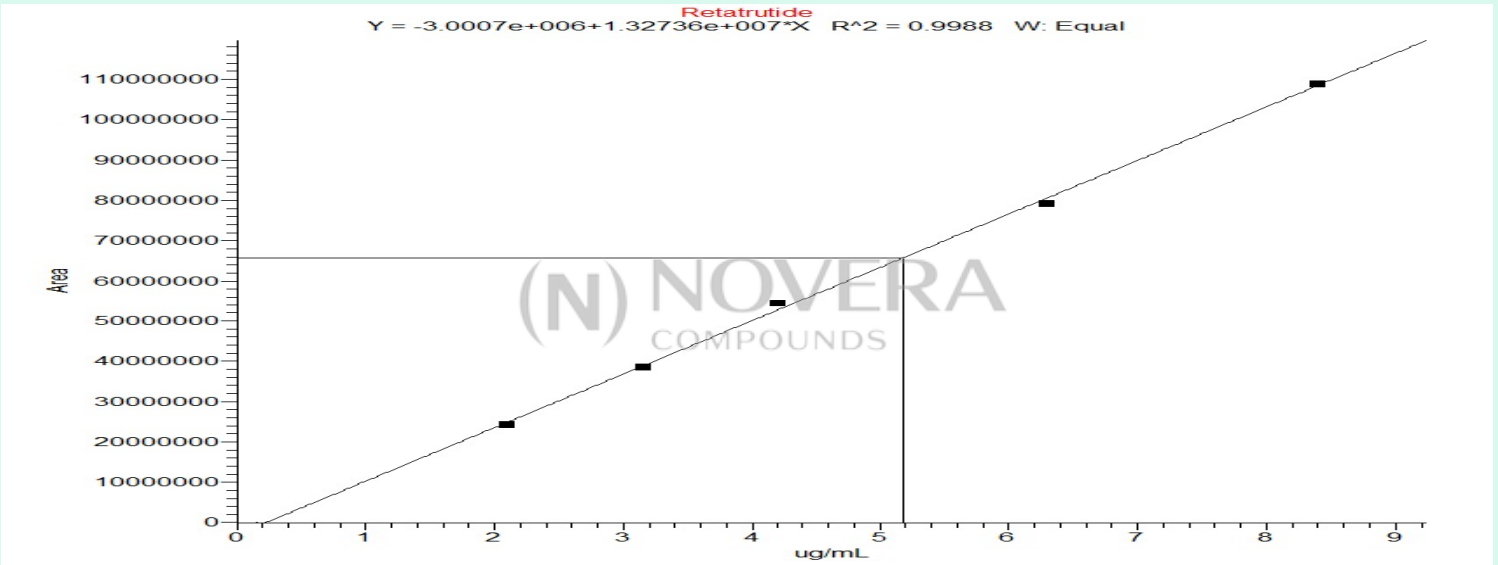


# Full Scan Mass Spectrometry Analysis

Novera-Retatrutide-10mg-01 #312 RT: 2.72 AV: 1 NL: 1.97E7  
T: FTMS + p ESI Full ms [800.0000-2000.0000]



## Calibration Curve



### Analysis Performed by

Dr. Roberto Marin  
Analytical Chemist  
contact@bioregen.com

COA #12532  
Security Key **NOVCOMP01**  
bioregen.com/verify

*Roberto Marin*

